



<http://themusicinternational.com>

Music Manuscript Sheets
June 2013





Help & Instructions

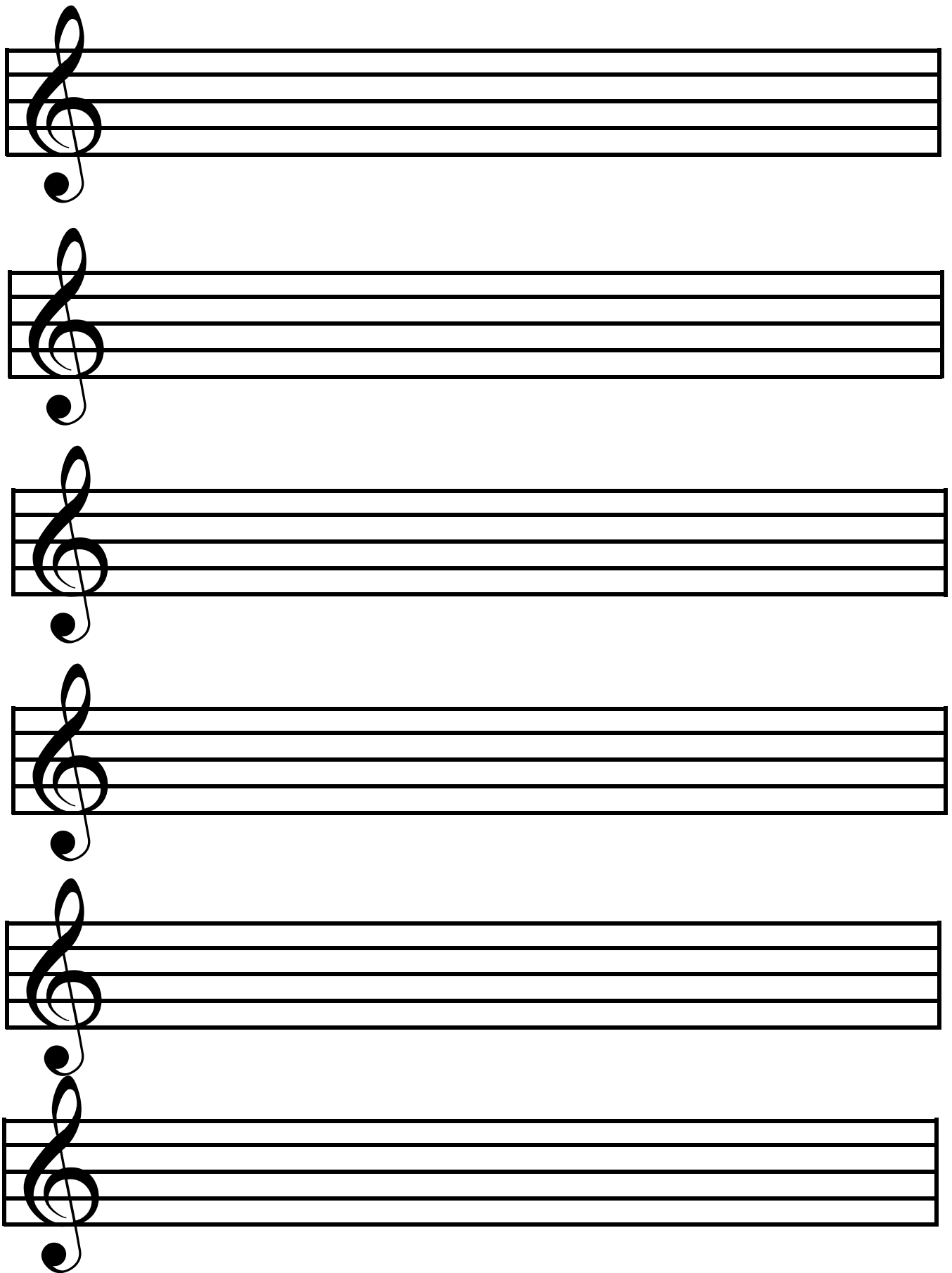
A. How to Print Books

1. Print ONLY the ONE page from the following pages that you need for now.
 2. Print just ONE COPY as a master on a printer and then have this photo-copied. This is usually cheaper than printing all the copies on a printer.
 3. There is a Category Code at the bottom of every page. It's a simple code to help you find YOUR page. Blank, Treble, Bass, Children,
 4. For very small children, disabled, very old use the LARGE PRINT sheet first. Then the medium sized print. We always start with the Treble clef. The next 2 pages are these.
 5. Once PHOTO-COPIED you can have it 'spiral bound' with FRONT and BACK-ING sheets/boards/your 'artwork' OR 'loose-leaf' placed in a binder.
 6. PRINTING EXAMPLE ...
EXAMPLE 1 : If a beginner Guitar, Recorder, Flute OR Violin player PRINT ONE COPY of 'Category GT'. Photo-copy 10, 20 or 100 pages as needed.
 7. Now print one copy EACH of the LAST TWO PAGES of this document. These become the FIRST and LAST pages for the 20 copies. Now total 22. Spiral bind these 22. You now have your FIRST Music Manuscript Book.
EXAMPLE 2 : If you are doing Theory Examinations; do the same as above EXCEPT that you will need page 'Category SB' as the master instead of Category GT. You will now have your FIRST Music Theory Work-Book.
- NOTE : Use Page numbers from the MASTER copy as required / photo-copied.

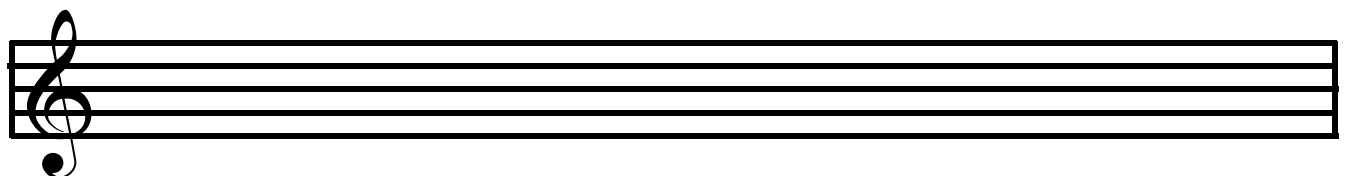
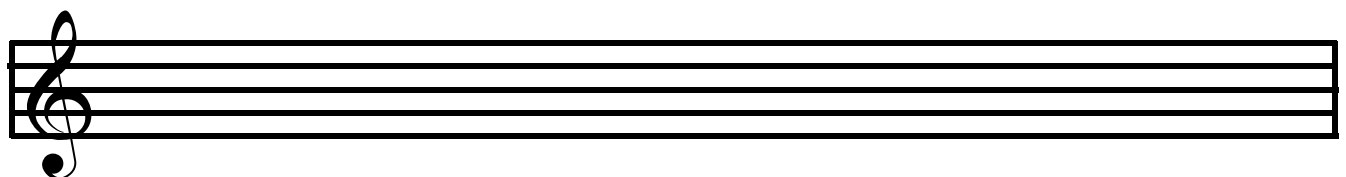
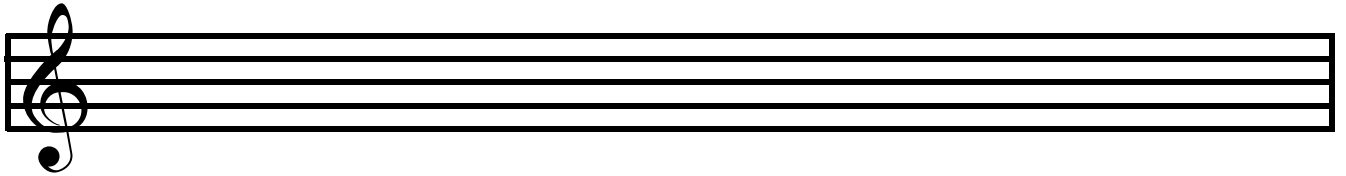
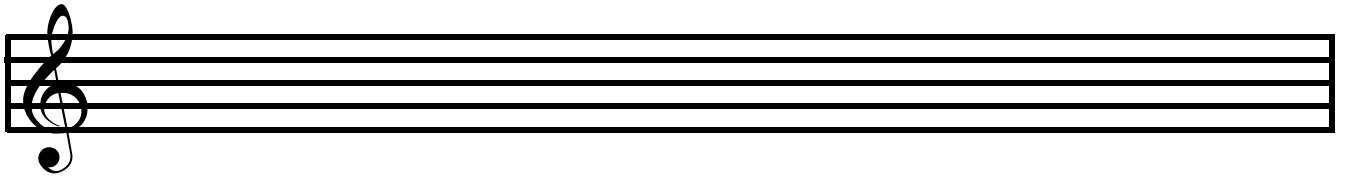
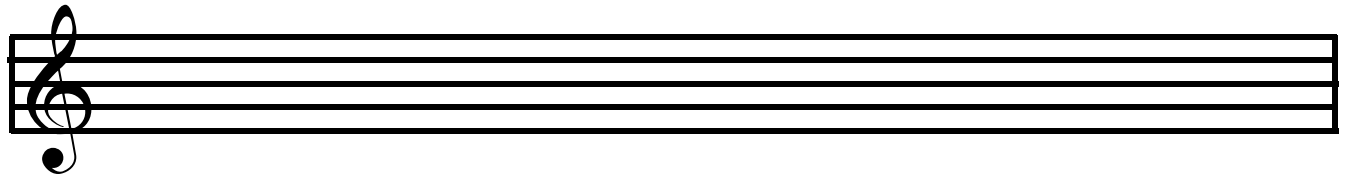
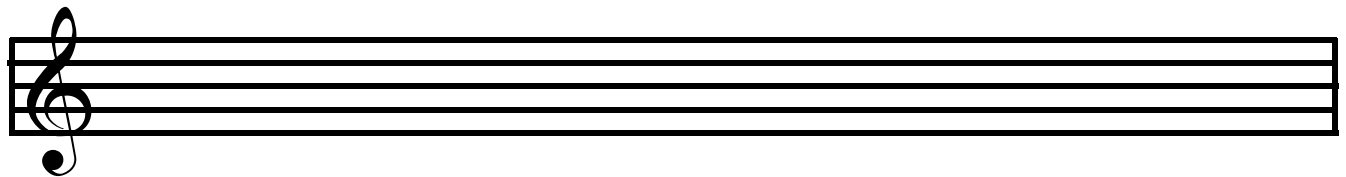
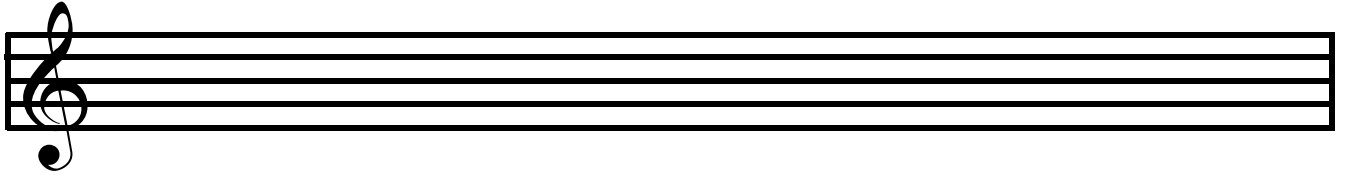
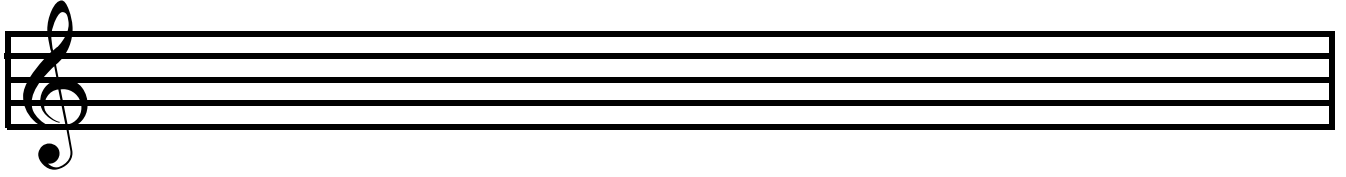
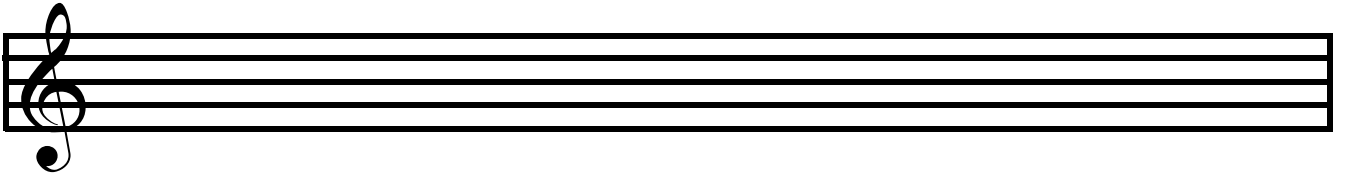
B. What this contains ...

The following pages are included ...

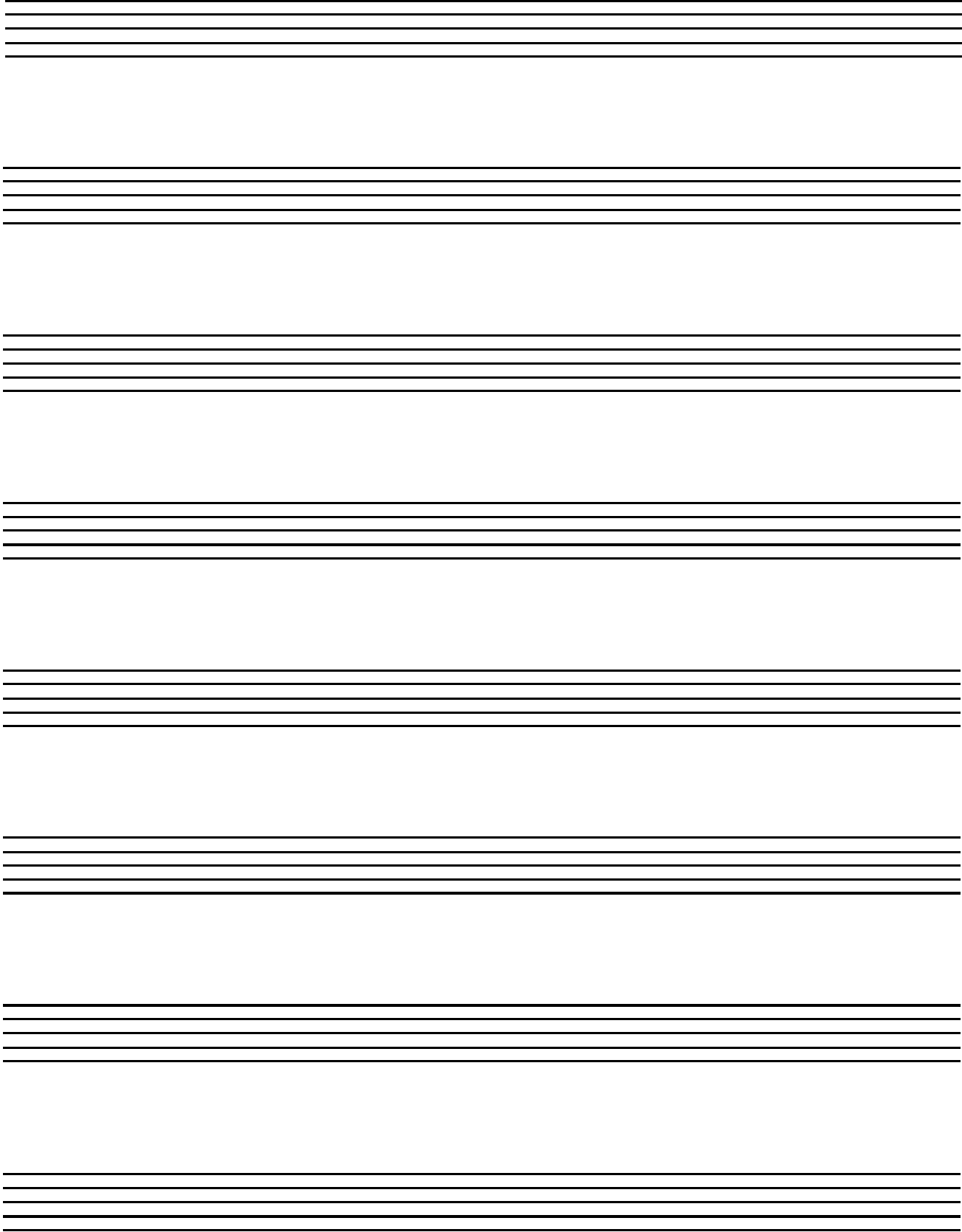
- 1 The first following sheet is for Children and large writing. (CT)
- 2 The one following this is where you would like notes to be added; for lyrics or VERY high or VERY low notes.
- 3 STANDARD Blank Sheet to write clef and early theory learning use.
- 4 Treble clef sheet for solo instrument or voice.
- 5 Bass clef sheet for solo instrument or voice.
- 6 Piano or SATB treble and bass clef.
- 7 No clefs. Sheet for duet. Use any / either clef for these.
- 8 No clefs. Sheet for trios. Use any clef for each.
- 9 No clefs. Sheet for quartet. Use any clef for each. Treble, Bass, Alto, Tenor etc.
- 10 Sheet for Guitar Quartet.
- 11 Sheet for Recorder Quartet or Woodwinds Quartet.
- 12 Sheet for String Quartet
- 13 C clef / alt clef for Viola
- 14 C clef / tenor clef for Trombone
- 15 Trio Sheet. Treble - Treble - Bass.
- 16 SATB for Voice. OR use any as appropriate.



Page No. _____

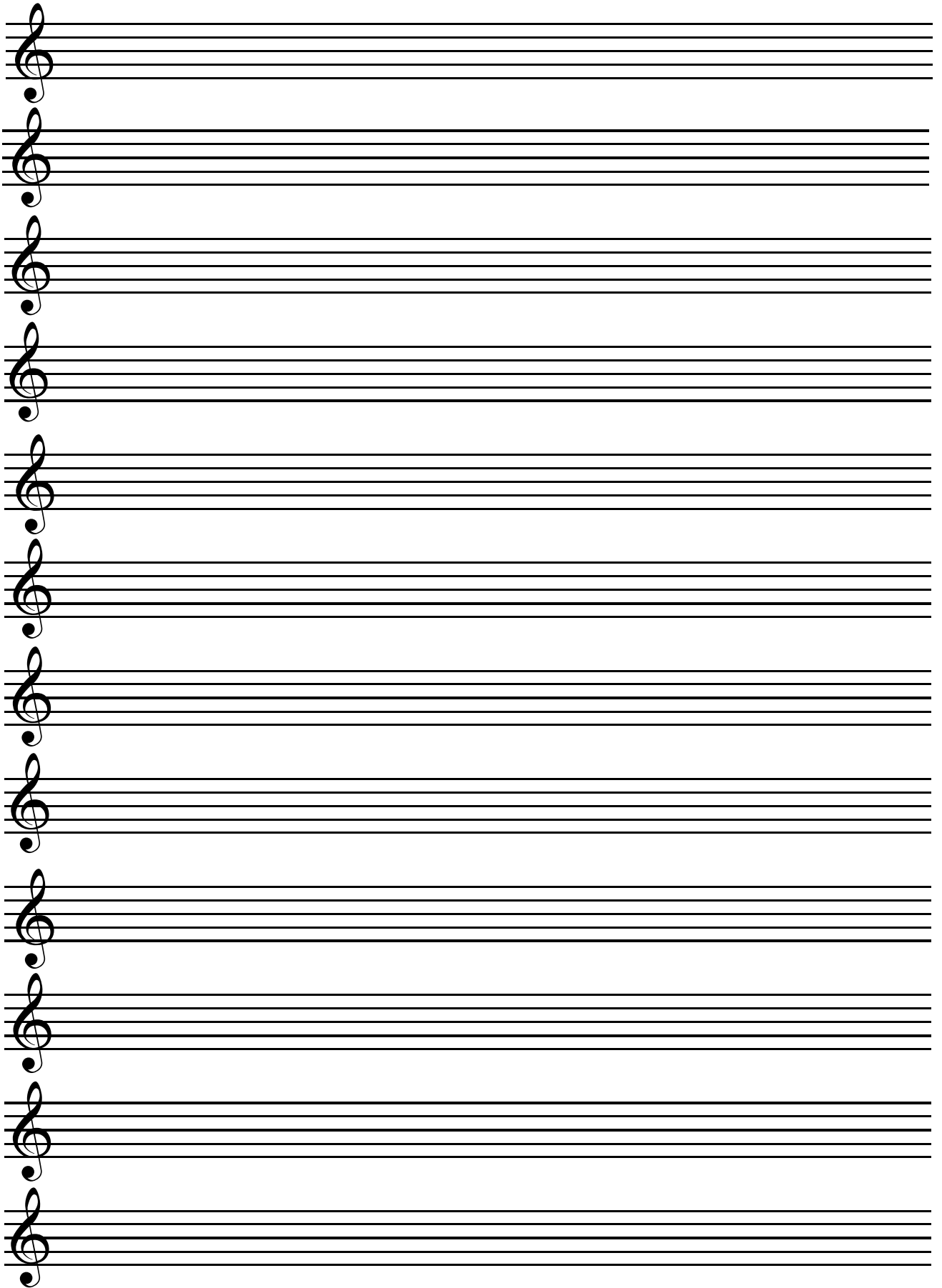


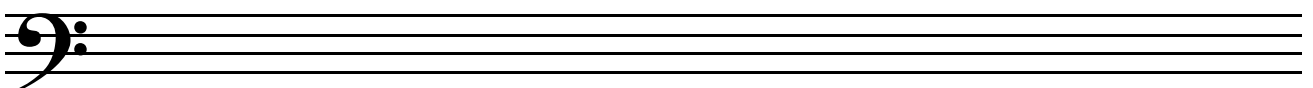
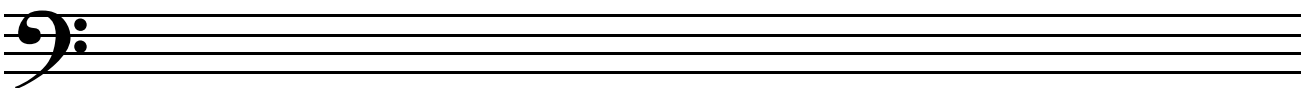
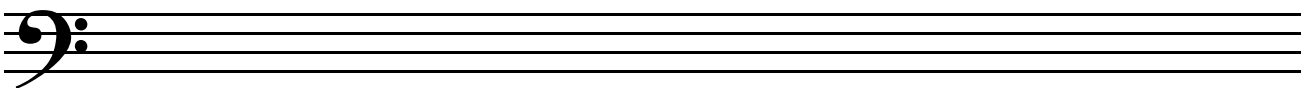
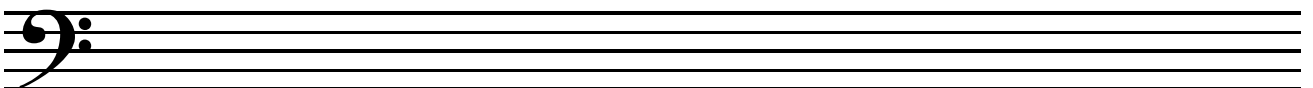
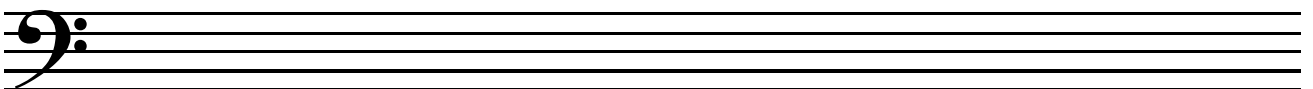
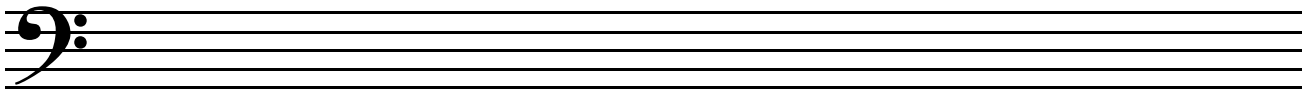
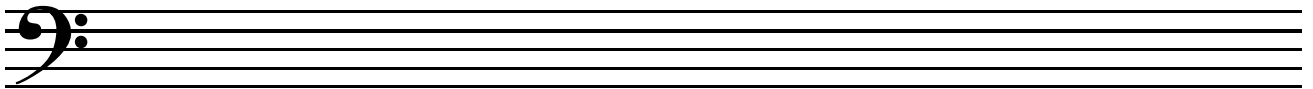
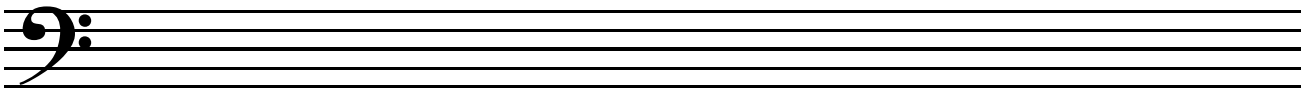
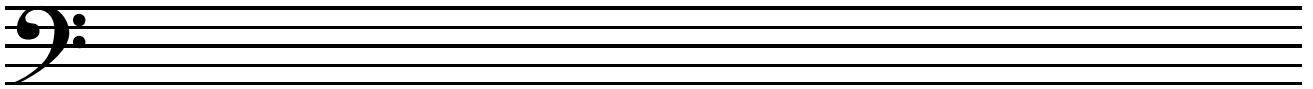
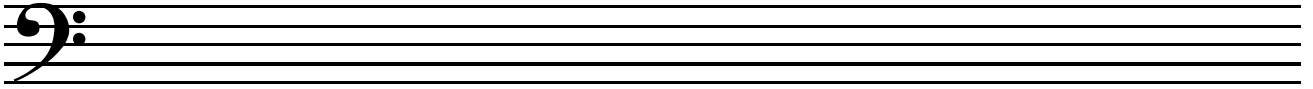
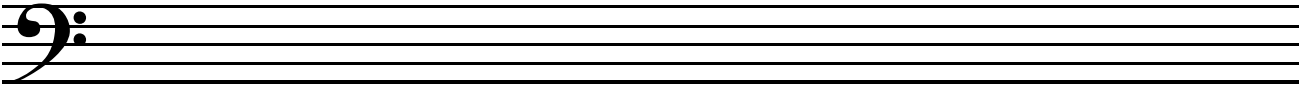
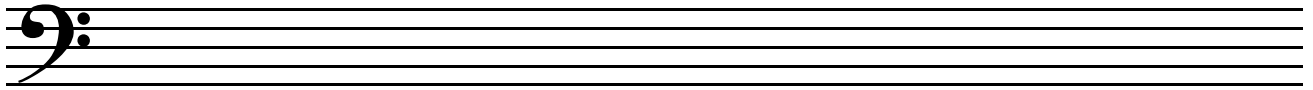
Page No. _____

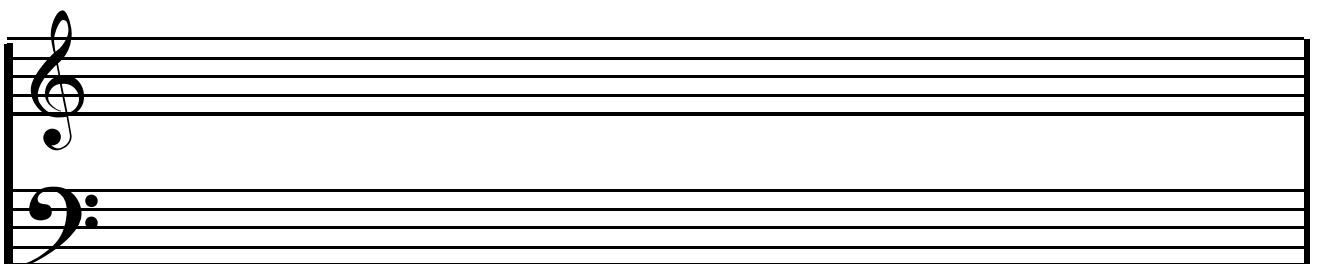
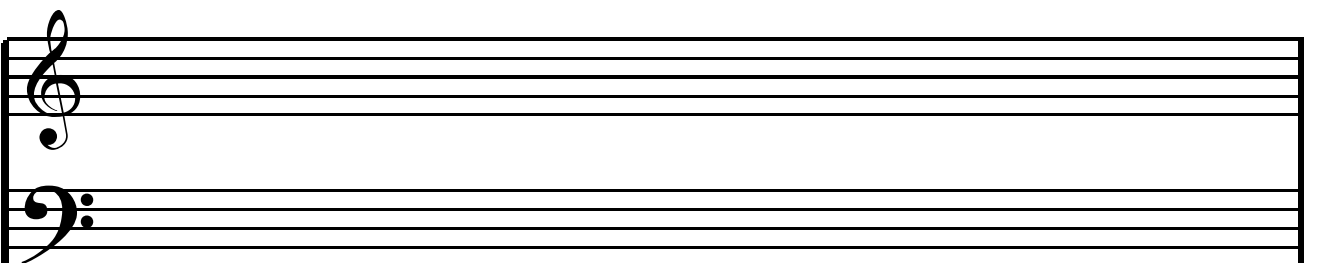
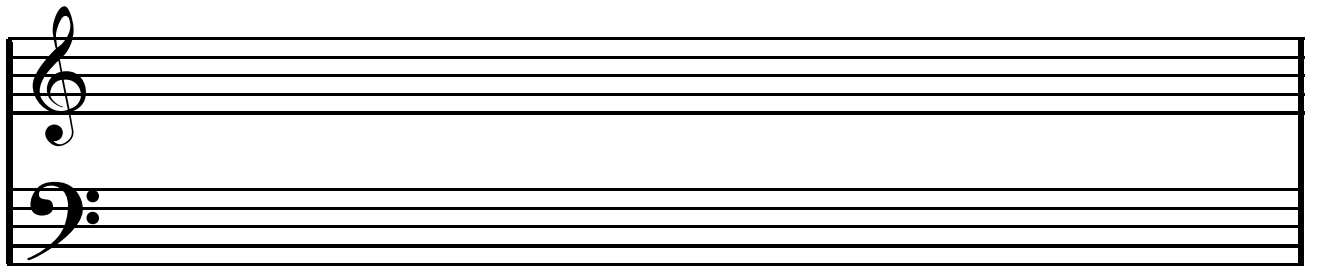
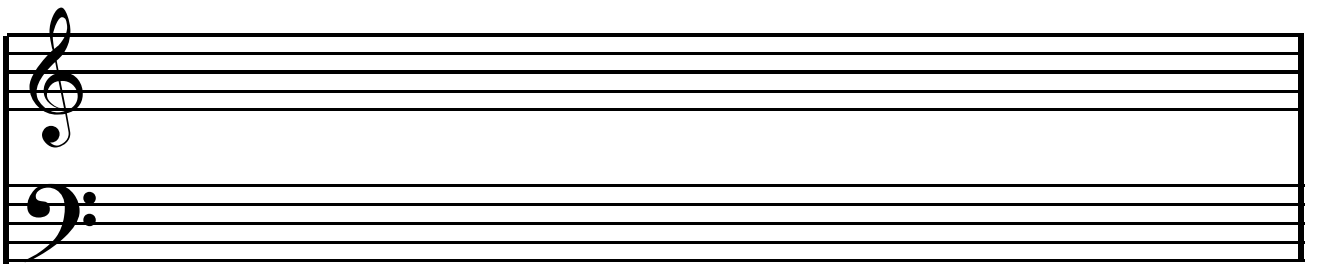
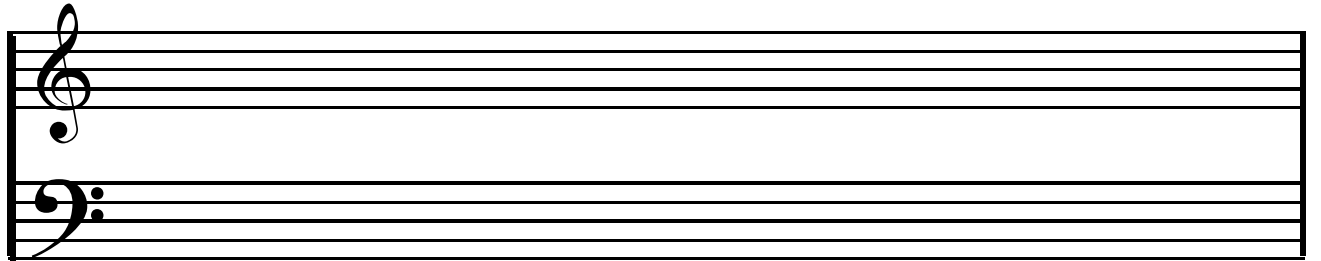
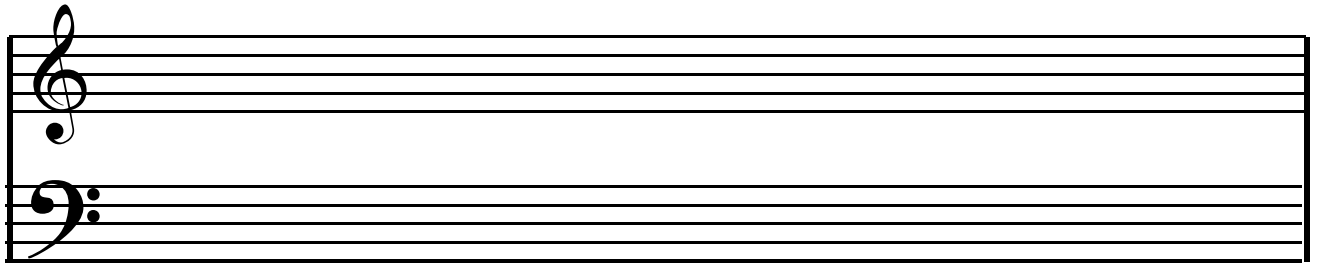


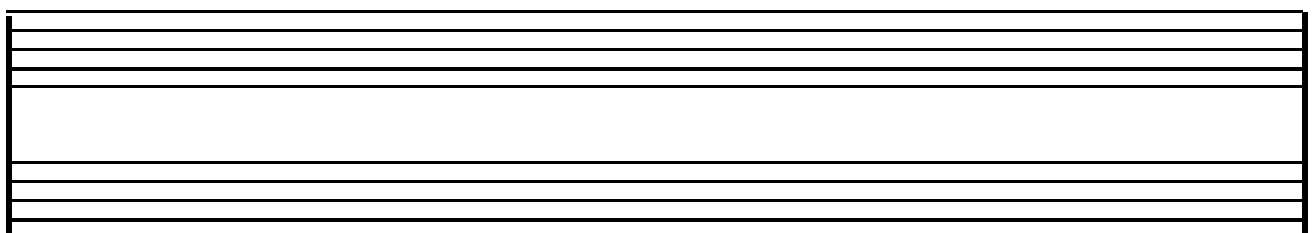
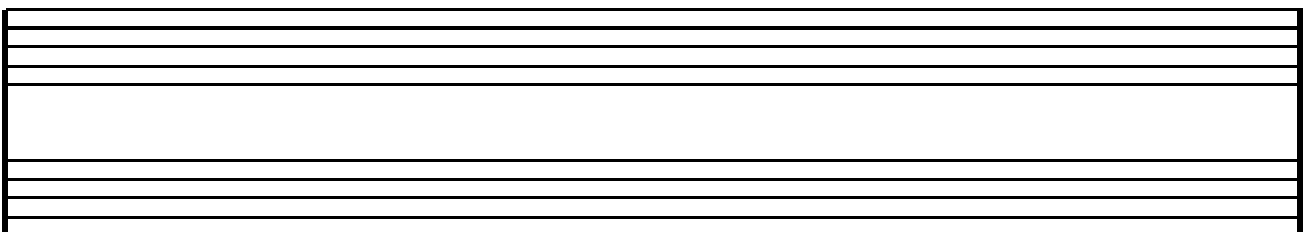
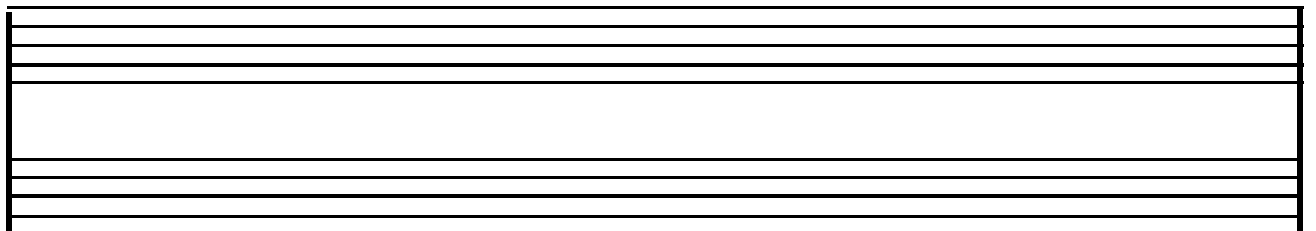
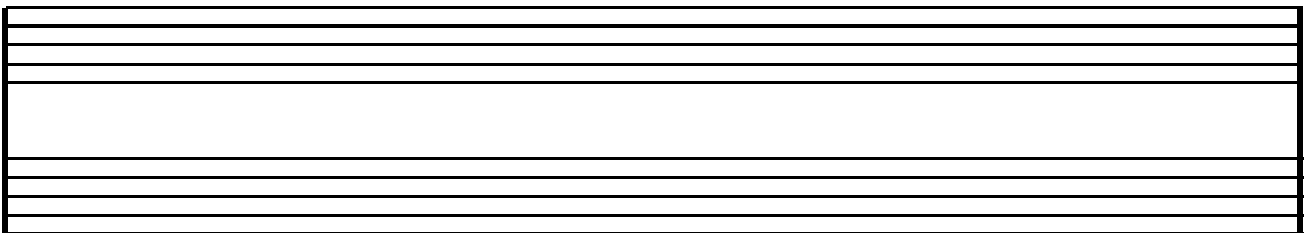
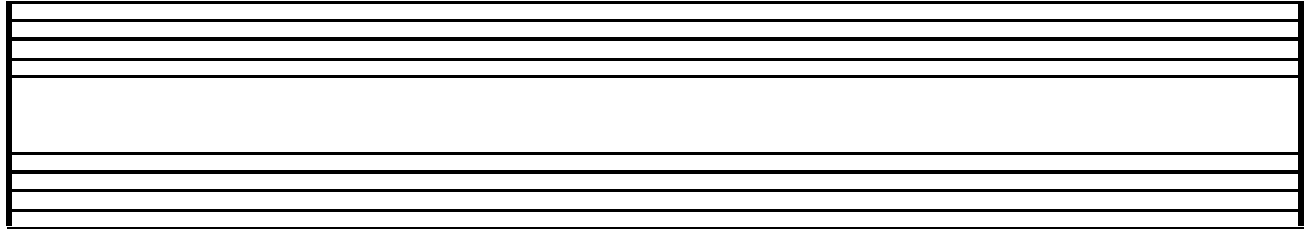
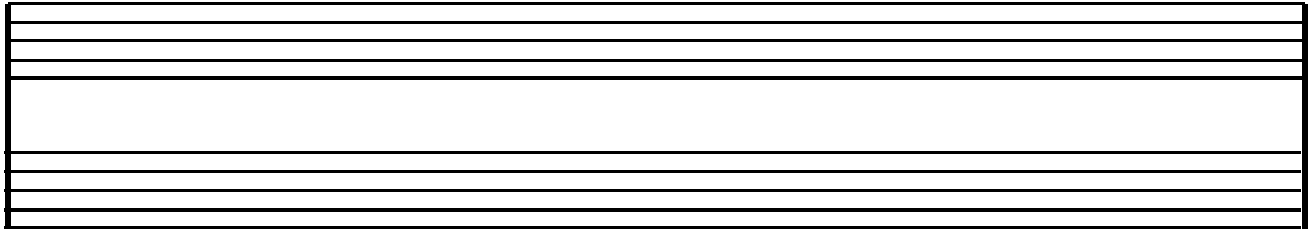
Page No. _____

The page contains 12 blank musical staves, each consisting of five horizontal lines, arranged vertically down the page. The staves are separated by small gaps. At the top of the page, there are two horizontal lines: one on the left and one on the right, with a gap between them.

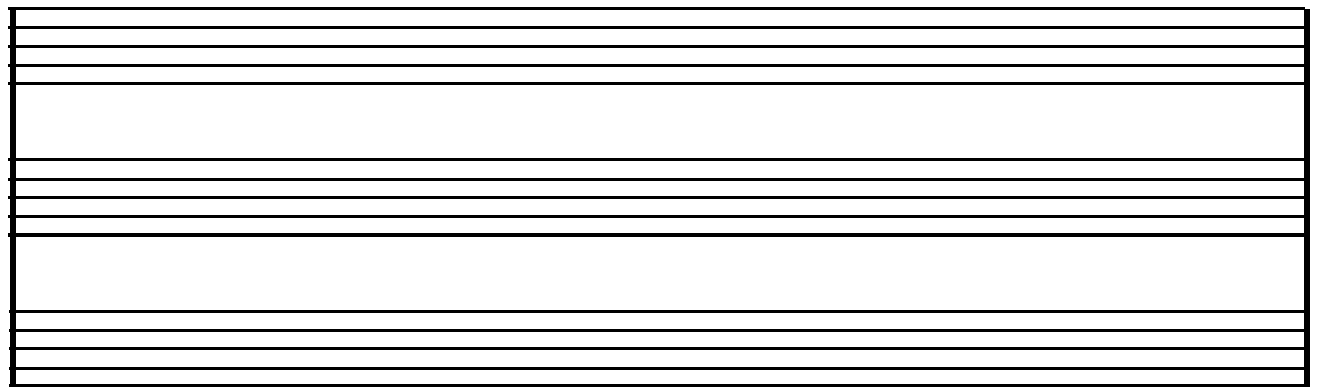
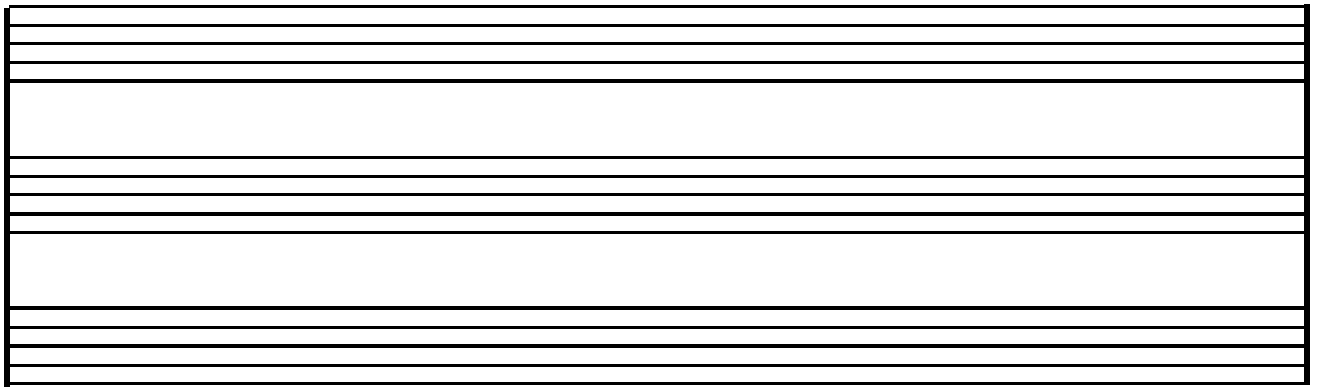
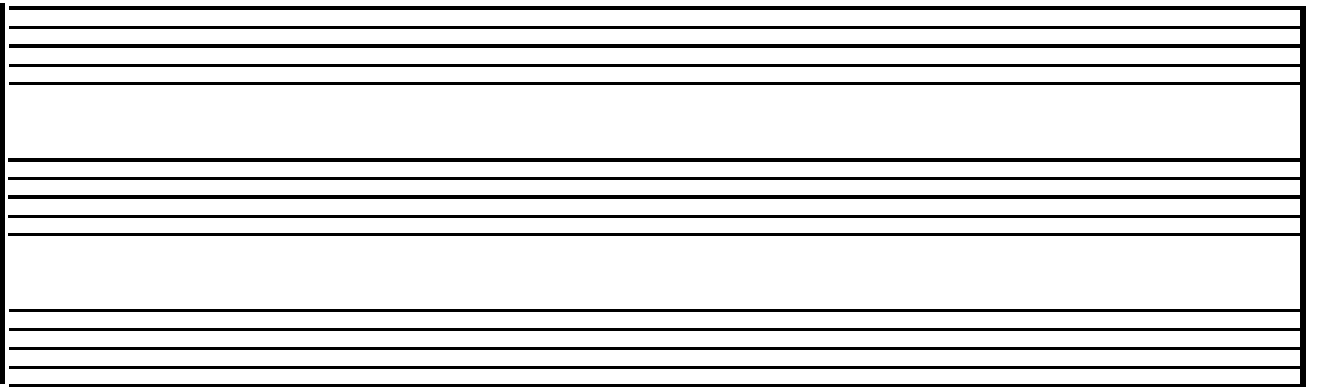
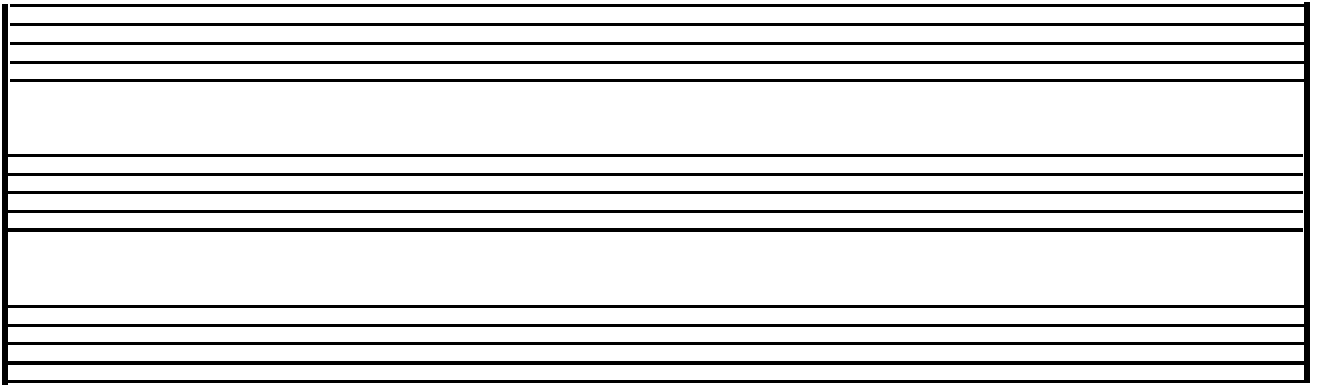




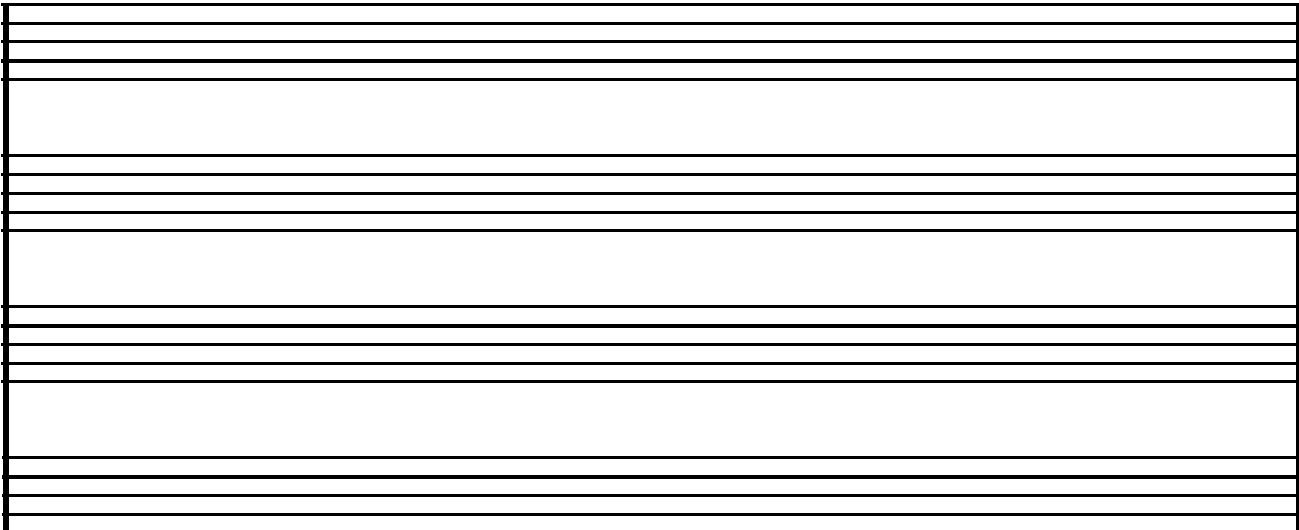
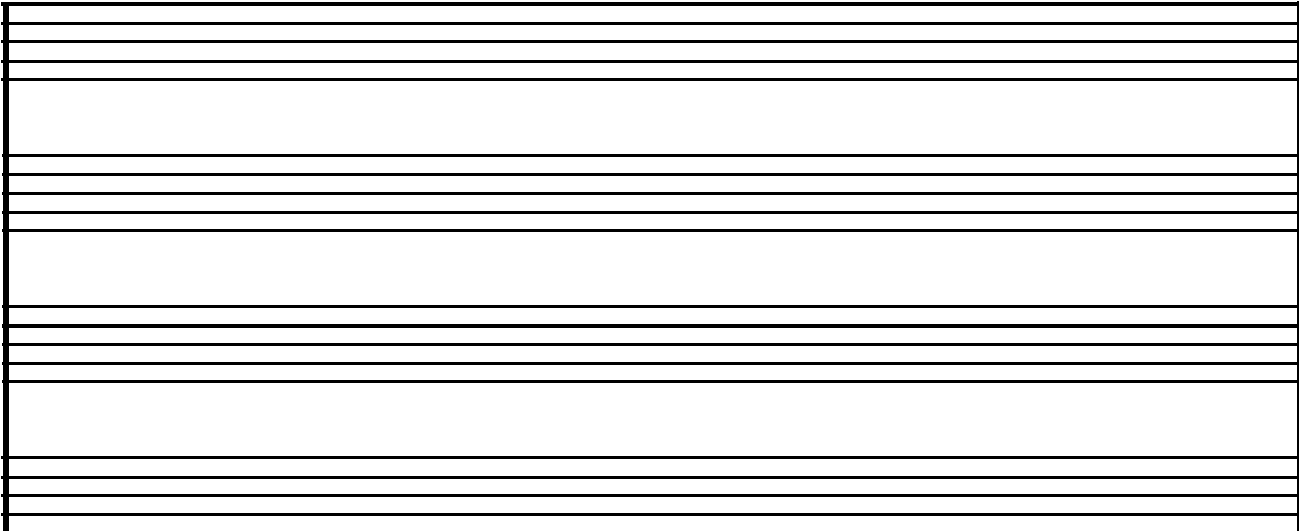
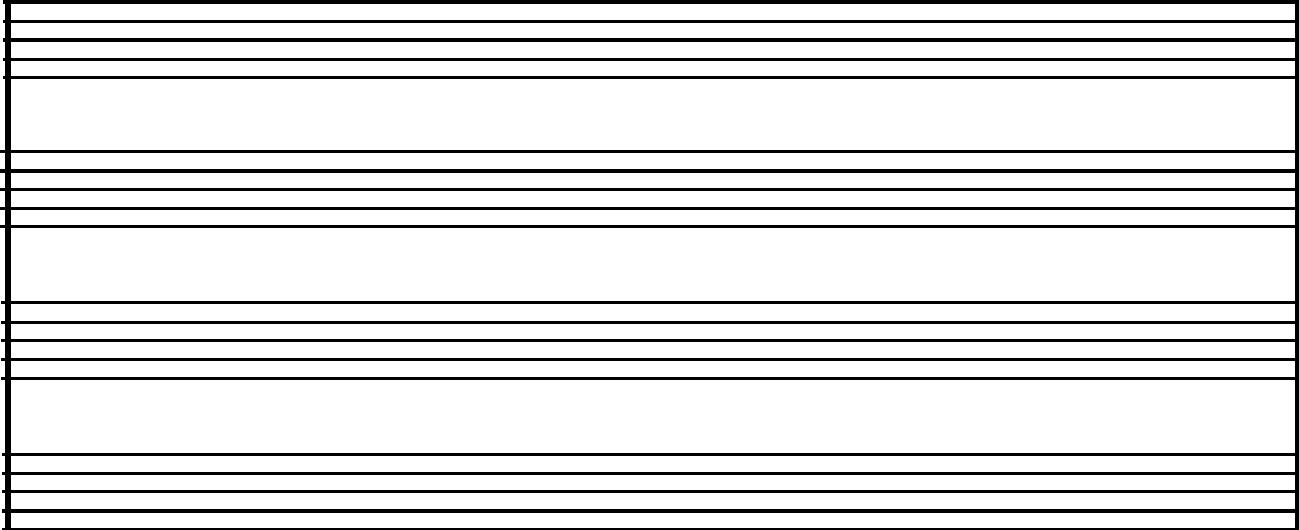




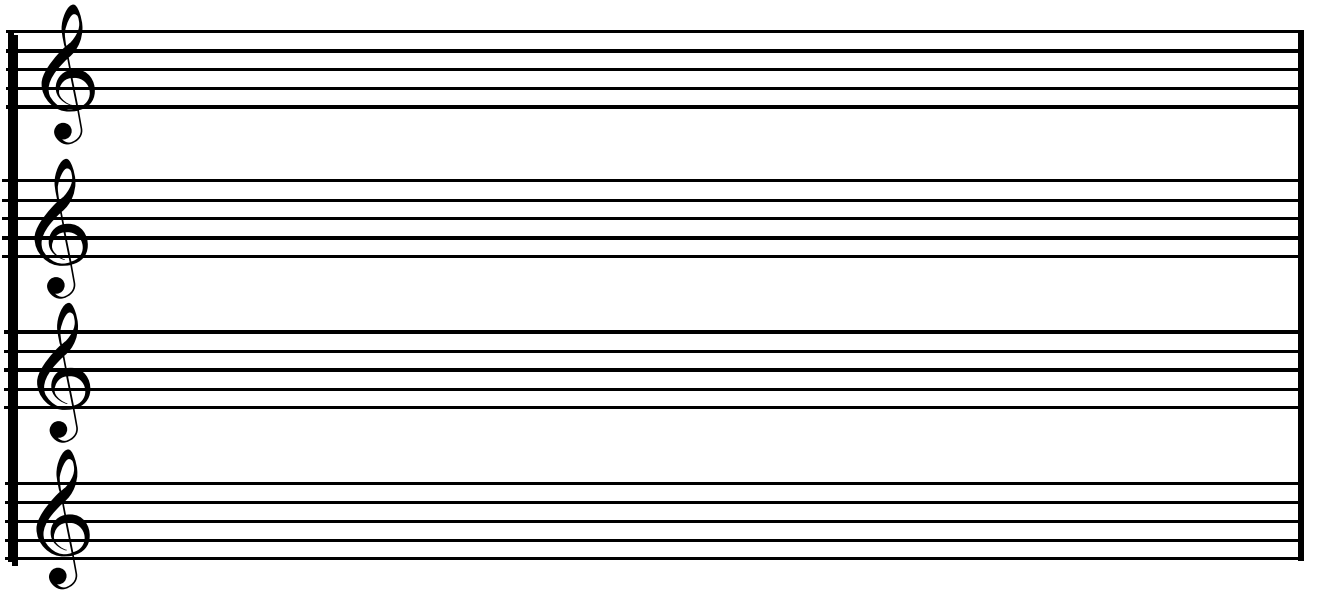
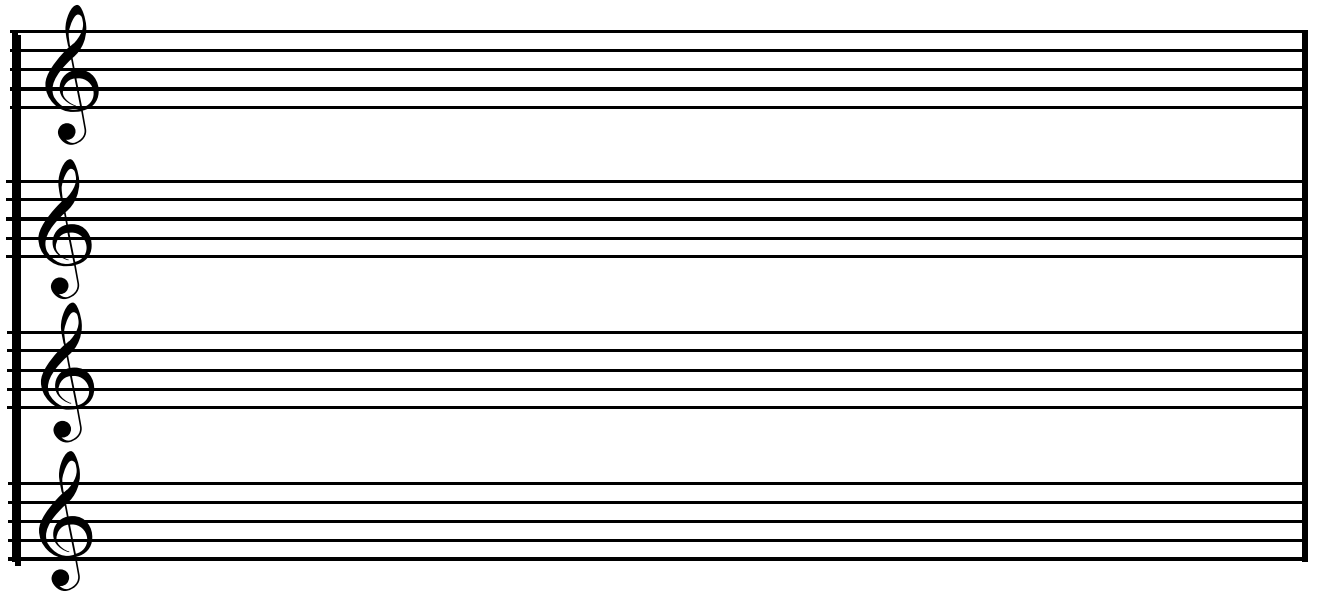
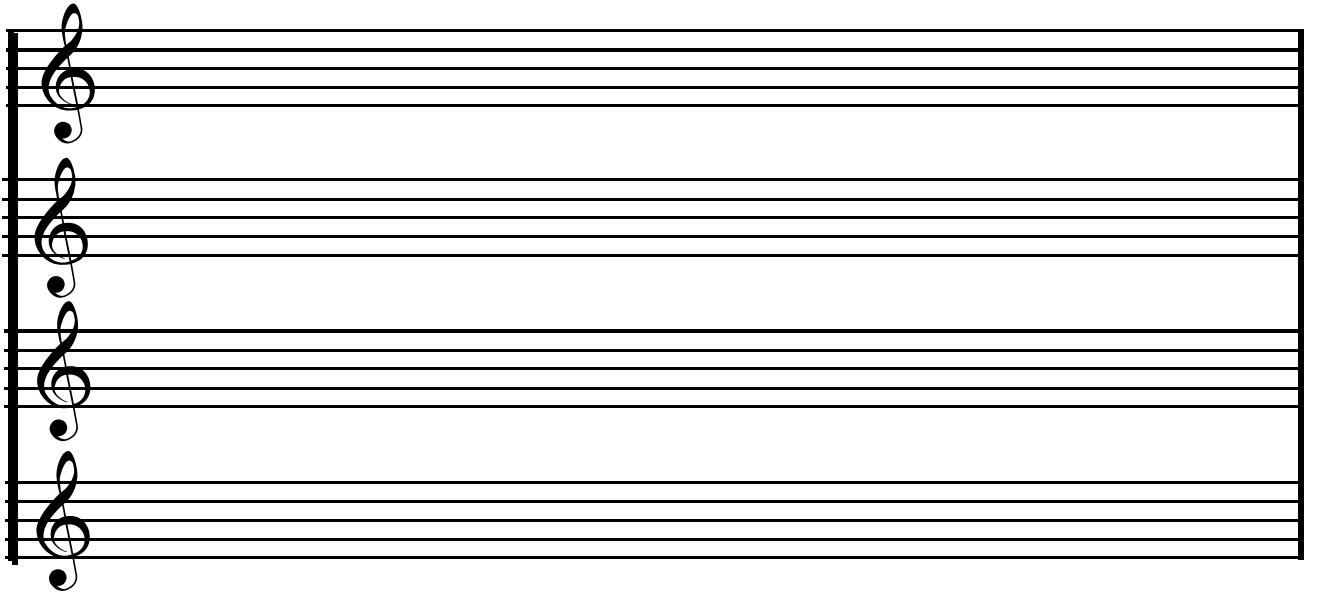
Duet Page No. _____

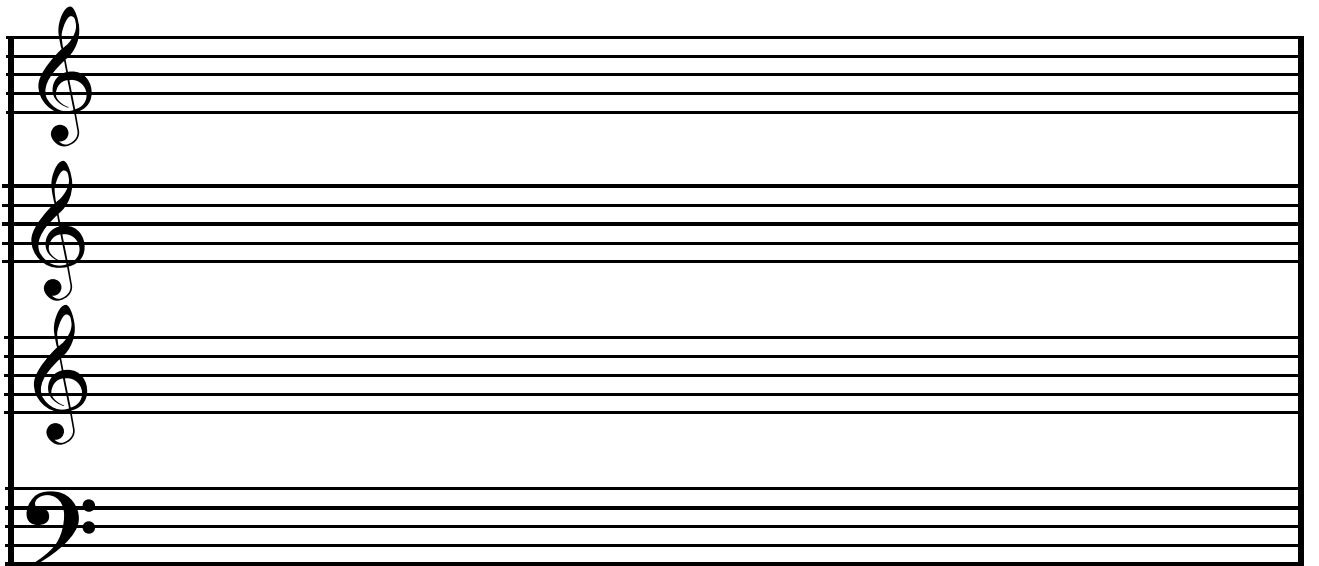
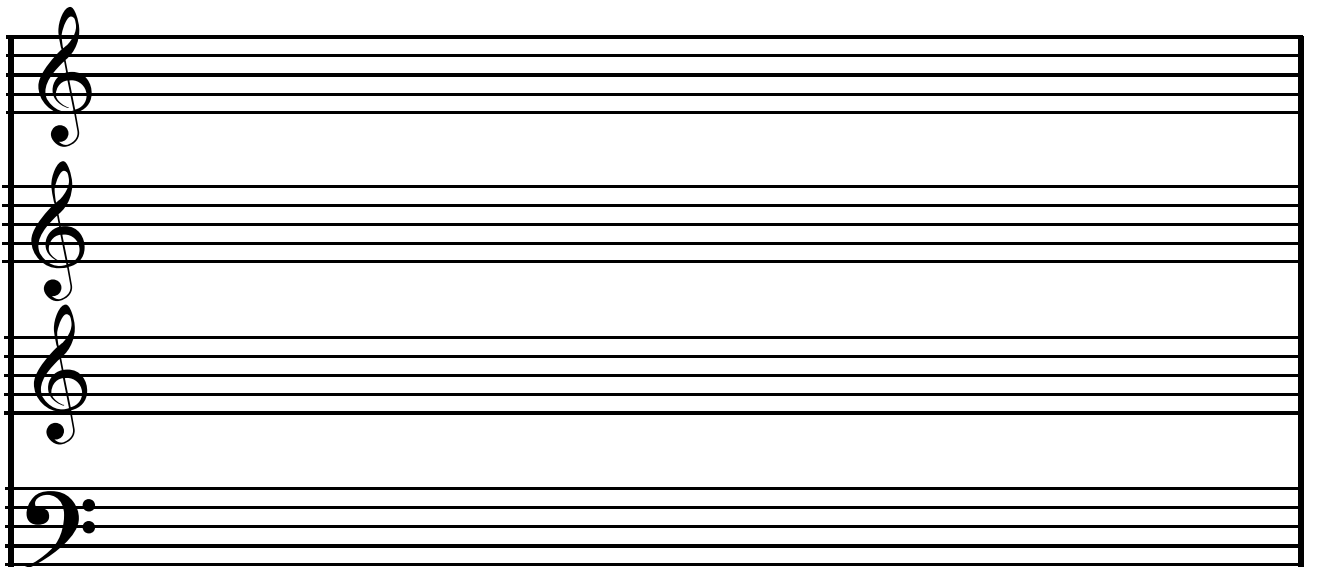
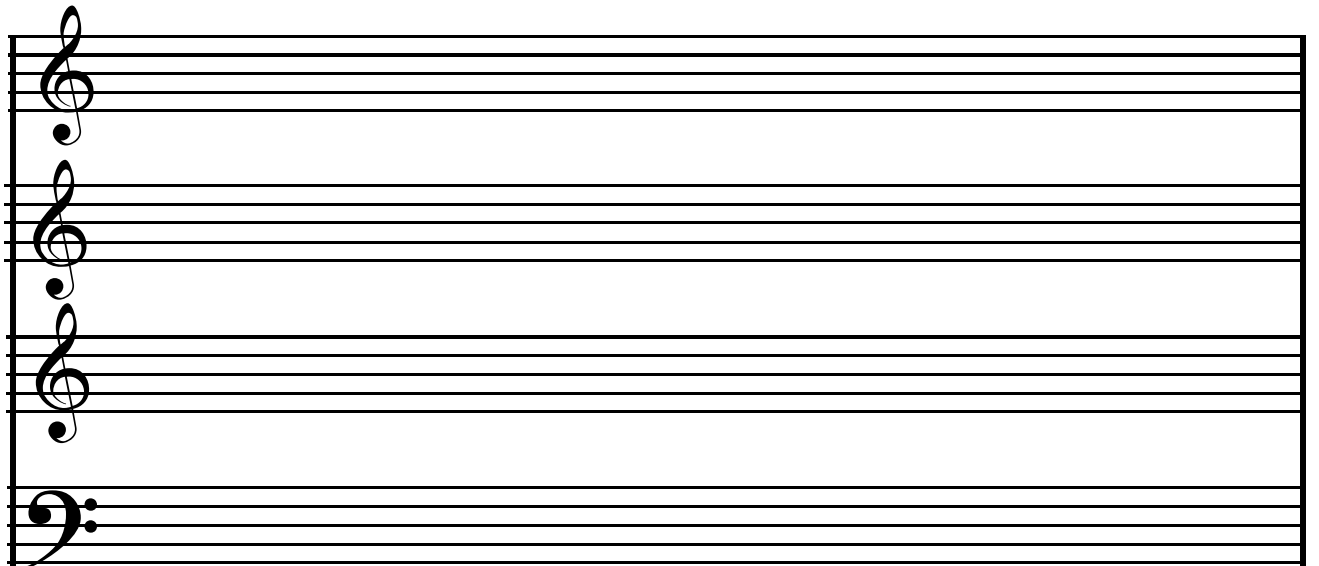


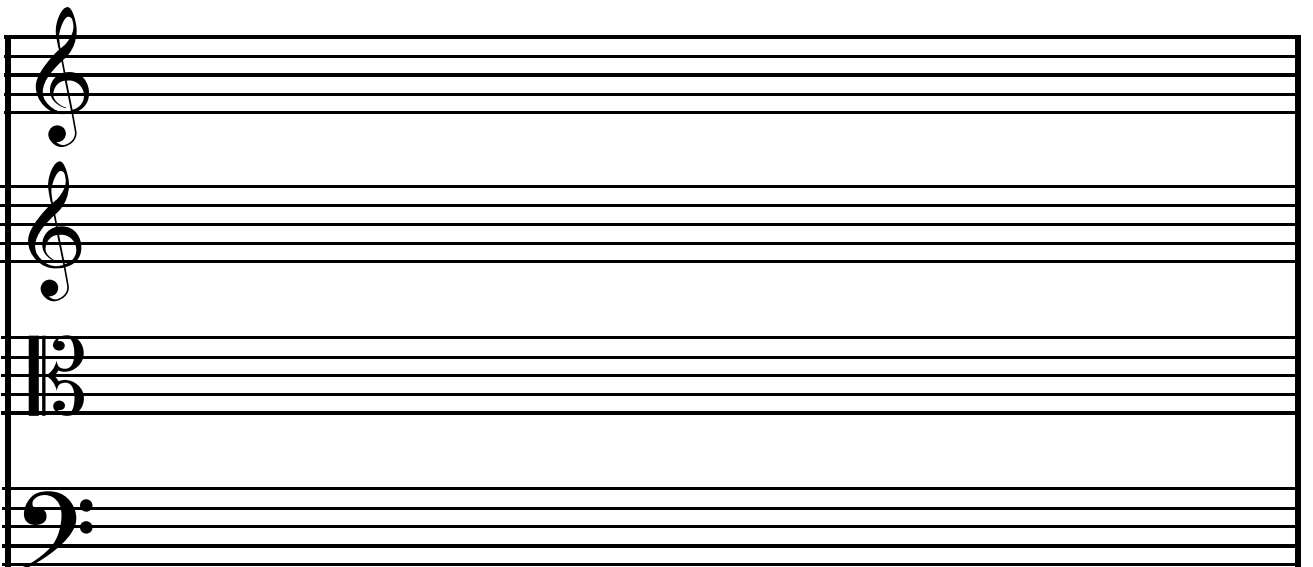
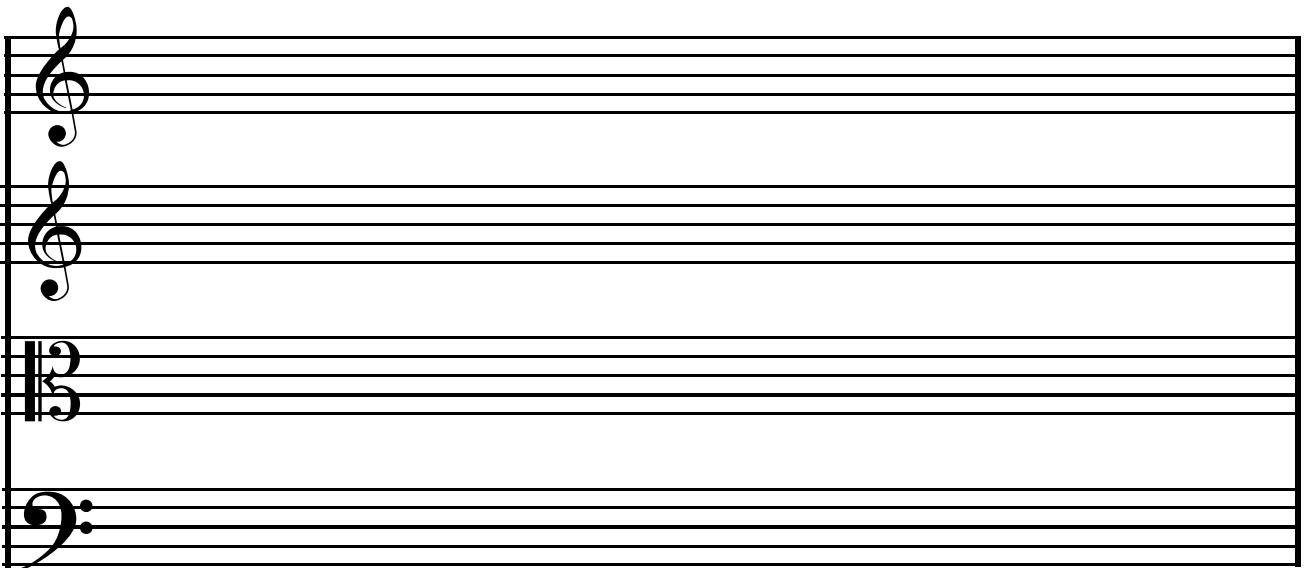
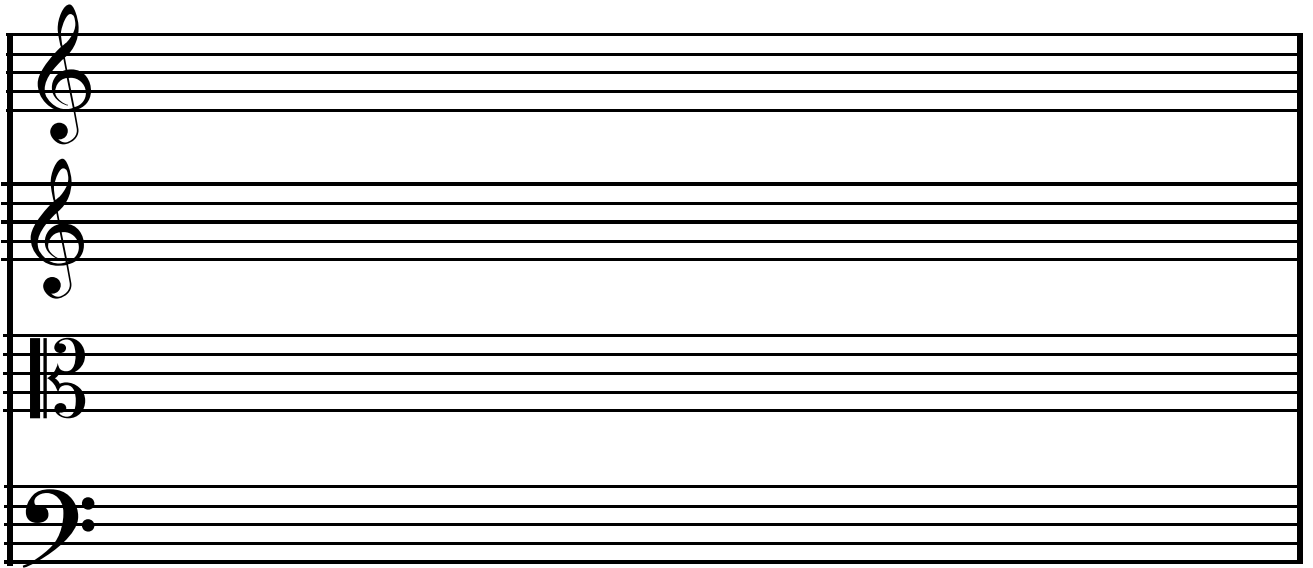
Trio Page No. _____

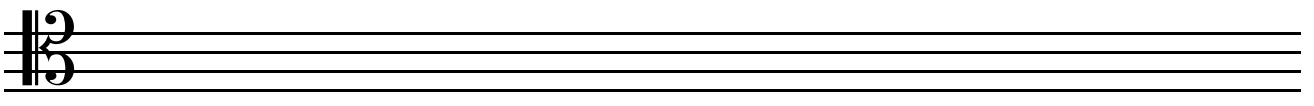
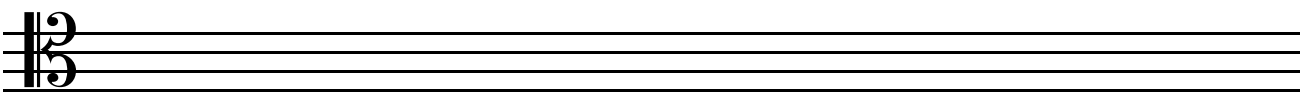
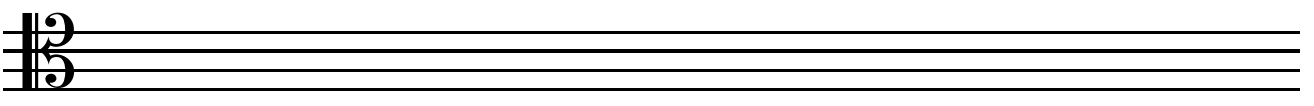
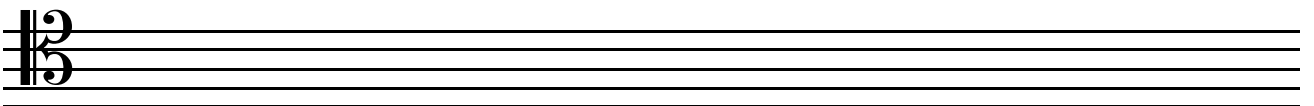
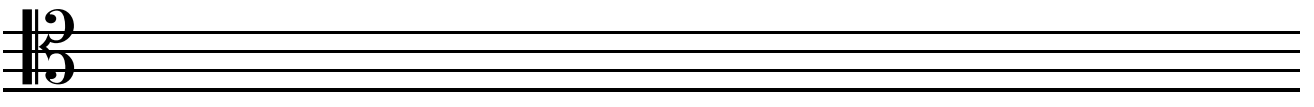
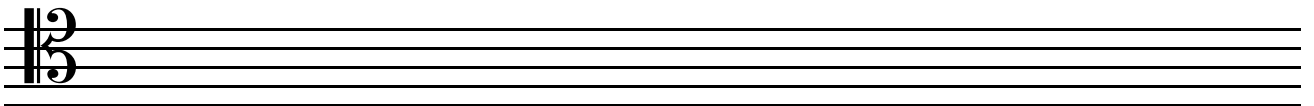
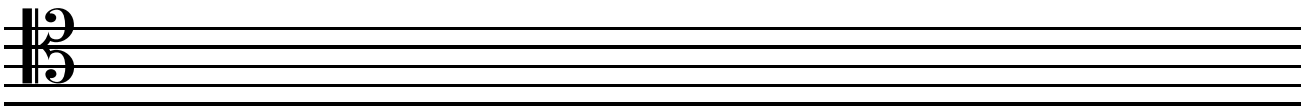
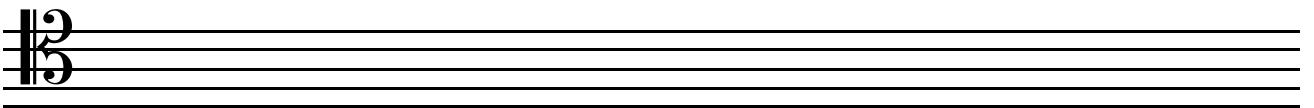
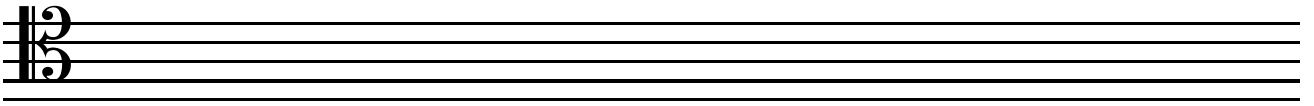
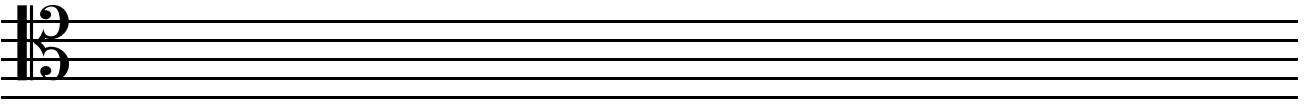
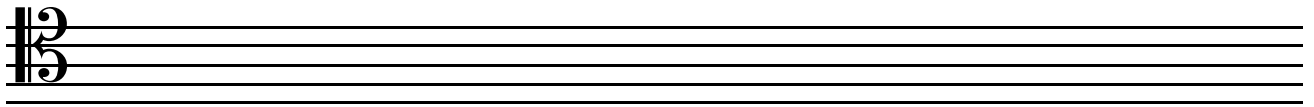


Quartet Page No. _____

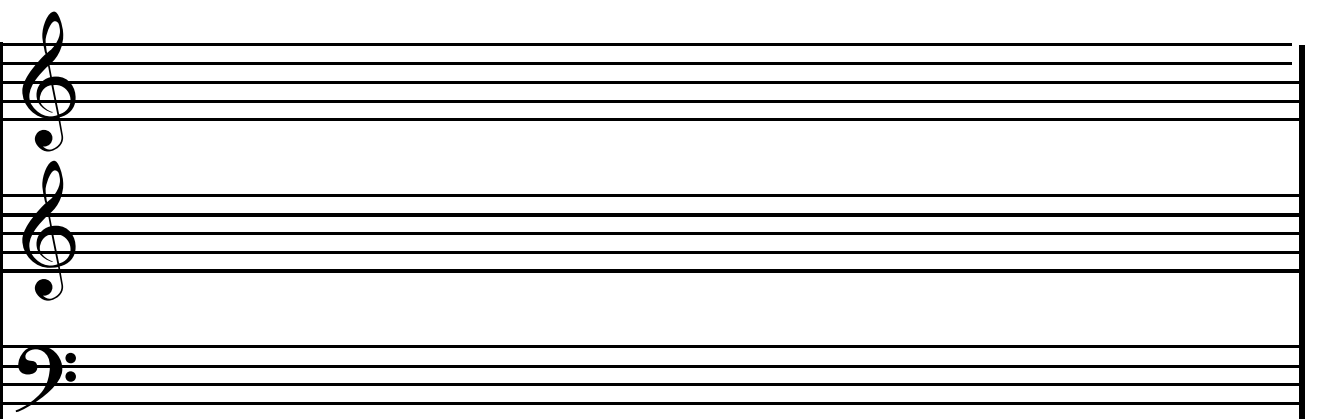
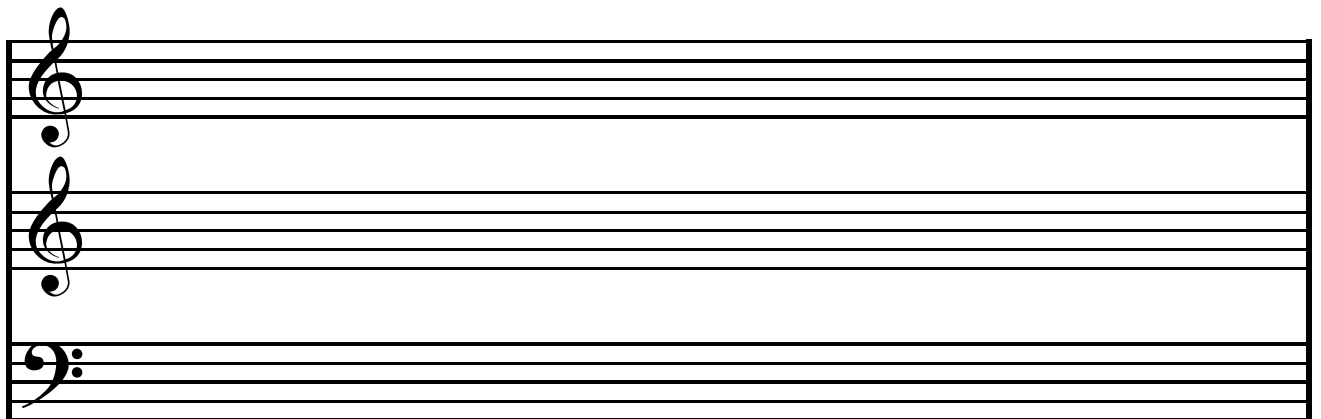
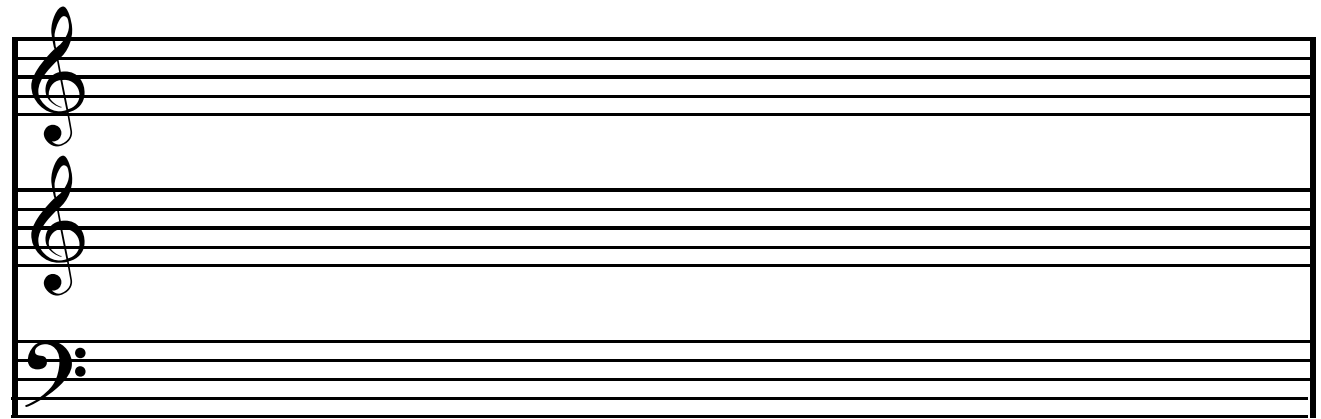
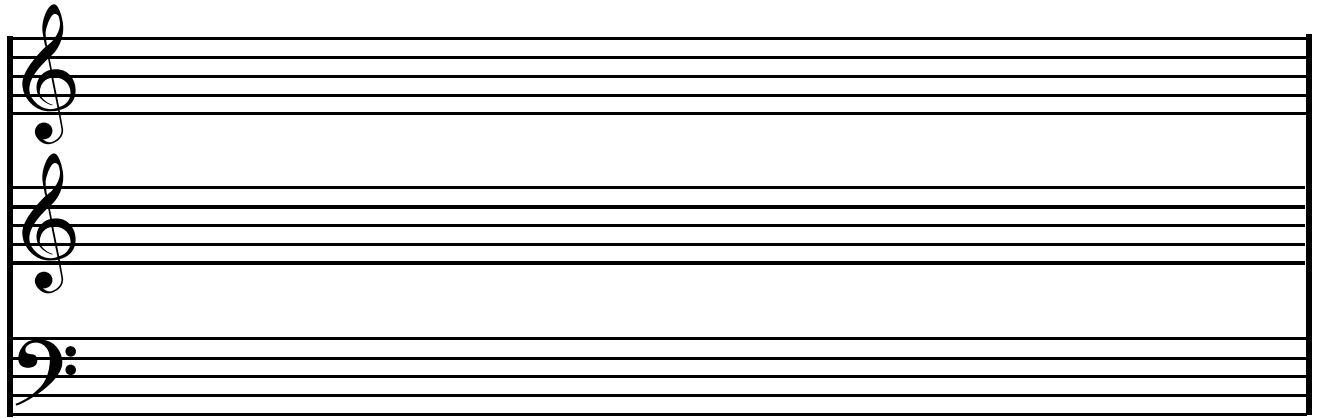




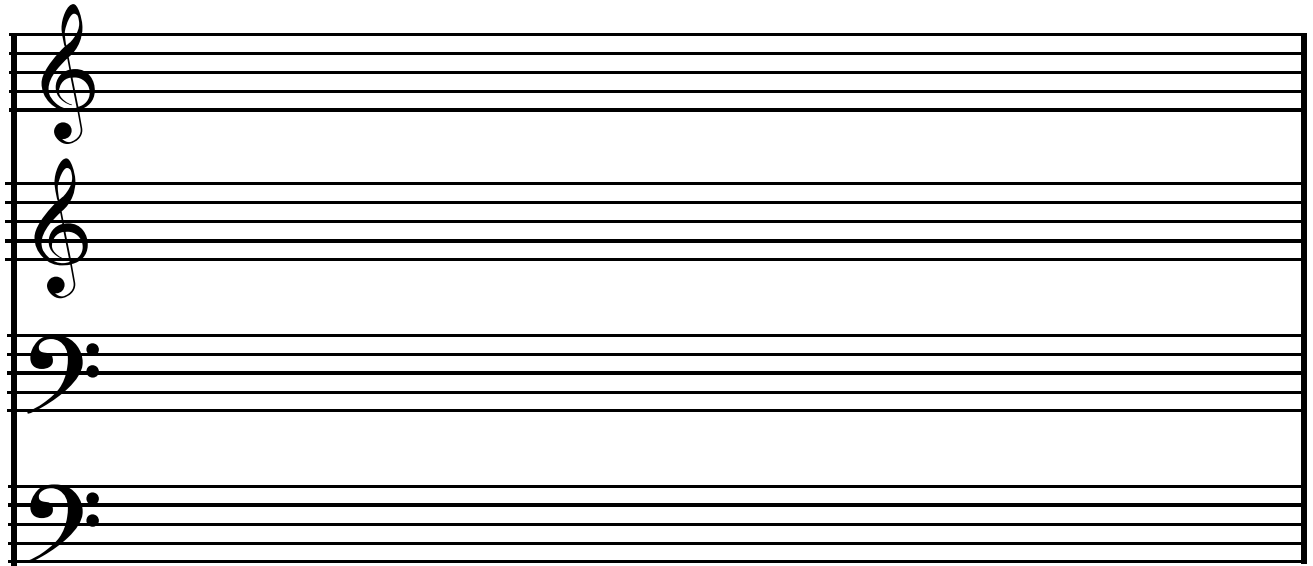


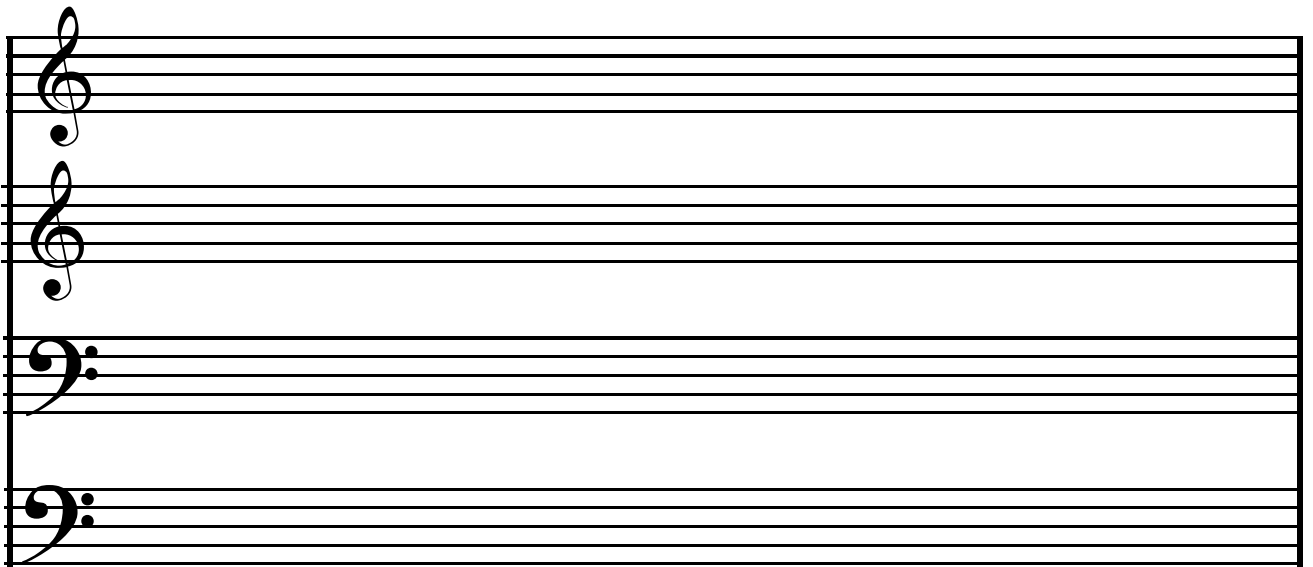


A page of ten blank musical staves, each with a bass clef. Above the first staff, there are two horizontal lines: one starting from the left margin and ending in the middle of the staff, and another starting from the right margin and extending to the right edge of the page.

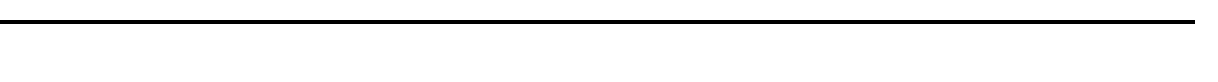
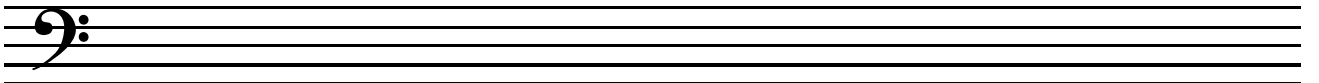
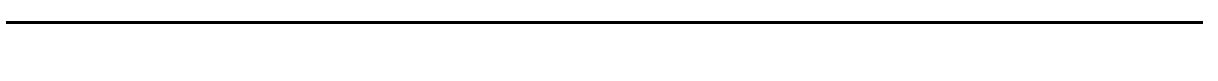
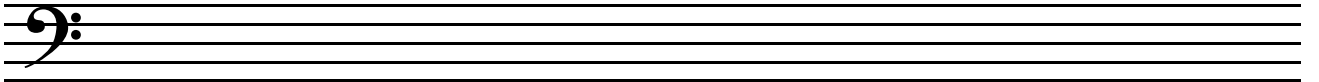
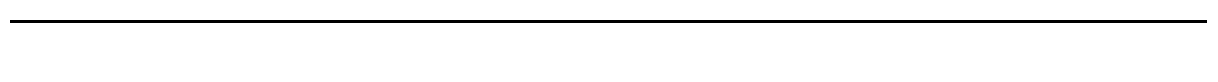
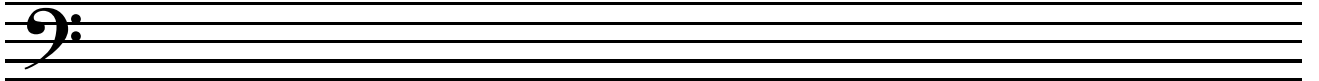
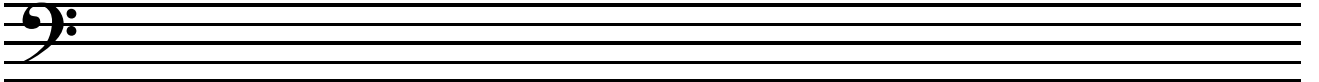
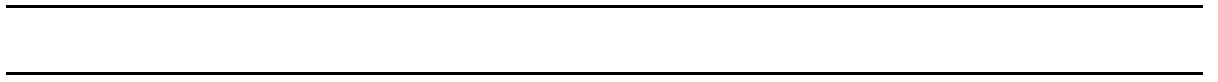
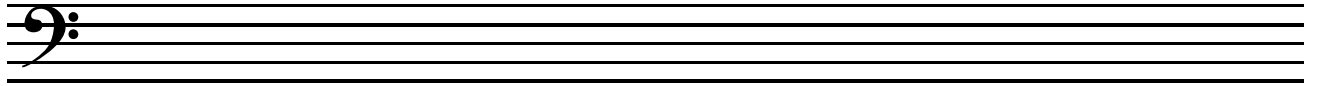


Trio Page No. _____

A musical staff system consisting of four staves. The top two staves are in treble clef, and the bottom two are in bass clef. The staves are empty.

A second musical staff system, identical in structure to the first, with four staves (two treble, two bass) and no notation.

Trio Page No. _____







Music Manuscript Book

Name : _____

institute : _____

Grade : _____

Book No : _____

Subject : _____

from (date) : _____

to (date) : _____



Website : <http://themusicinternational.com>
emailid : thedean@themusicinternational.com
Contact : +91 98450 61870

Music Manuscript Sheets
(.. and much more with a myMI Annual
Subscription from our Website)